

vee

Dungeel Circle

CONCEPT REPORT

April 2024 / Issue A

The elders of this land will plant the seed of community, and we will nurture and watch over their vision as it grows.

Dungeel means 'people' in the Yuggera language.

Ipswich Central Partnership
icp.

in collaboration with
Boorompah Goupong Aboriginal Corporation



Acknowledgement of Country

Our team acknowledges the important role Aboriginal and Torres Strait Islander people play within the design, arts and placemaking community.

Our team acknowledges the Jagera, Yuggera and Ugarapul People people, the traditional owners of the land on which the site stands.

We acknowledge their continuing connection to the land, sea and community, and pay our respects to their lores, culture, customs and creation spirits.

Our team recognises the importance of embedding Aboriginal and Torres Strait Islander perspectives across all design phases to safeguard authentic and positive economic + place-making outcomes.

We further recognise our role as Landscape Architects and Urban Designers and the important stewardship and custodianship responsibility that we stow in designing on Country, for the benefit of the local people and care for Country.

We pay respect to their elders and community leaders past, present and emerging.

PREPARED BY

Vee Design

COLLABORATORS

Ipswich Central Partnership

Boorrumpah Goupong Aboriginal Corporation

Ipswich City Council

document register J001346

Issue	Date	Prepared by	Approved by
A	17/05/2024	AL	DH



01 Project Background + Vision

DRAFT

1.1 / Project Background

The revitalisation of Bell Street is an initiative by ICP, and members of the Ugarapul people to transform an inactive space into a vibrant gathering hub for their community. Dungeel Circle is envisioned as a vibrant hub for community connection, strategically located in the central precinct of Ipswich. This multifunctional space is designed to accommodate general public use and specific activities, including important men's group sessions.

At present, men's group sessions organised by the Boorrumpah Goupong Aboriginal Corporation take place in various city parks across Ipswich, such as the RSL gardens. These locations lack the necessary seating arrangements and amenities to properly support these gatherings. The new Dungeel Circle is specifically designed to enhance men's mental health, wellbeing, and resilience by providing a setting that is inclusive, accessible, and culturally sensitive, ensuring physical safety and comfort for all participants.

The design of Dungeel Circle was developed through a collaborative and inclusive process involving Traditional Owners. This approach was realised through open design workshops, reflecting a deep understanding of community needs and aspirations for this new, practical space on Bell Street.



Boorrumpah Goupong Aboriginal Corporation Men's Session *source: mens-mental-health.blog*

1.2 / Cultural Identity

The redesign of this neglected space into a place that will reflect the cultural identity of the indigenous community in various ways:

CULTURALLY RELEVANT ELEMENTS, SYMBOLS, AND ARTWORK

The design will incorporate culturally relevant elements, symbols, and artwork that are significant to the indigenous community. This will help create a sense of belonging and pride among community members.

INDIGENOUS PAINTING BY YOUTH

The space will feature an indigenous painting created by youth, which will reflect the aspirations for the future. This artwork will contribute to a sense of pride and connection among the community.

COLLABORATION WITH ELDERS AND INDIGENOUS CULTURAL ADVISORS

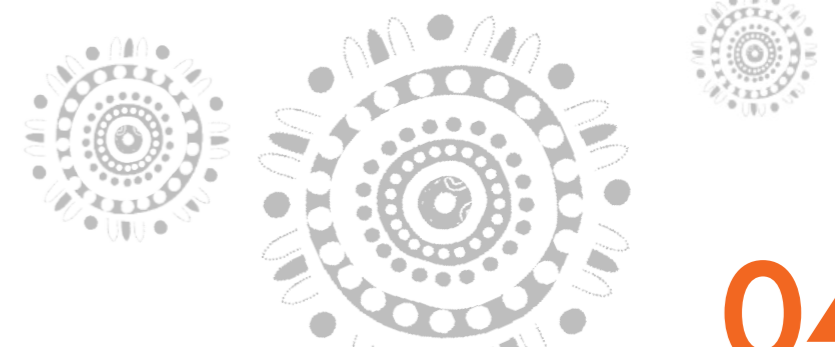
The design process will involve collaboration with elders and indigenous cultural advisors. Their input and guidance will ensure that the design incorporates elements that are culturally significant and aligned with the community's values and traditions.

CELEBRATION OF INDIGENOUS CULTURE

The design will celebrate and promote indigenous culture by showcasing artwork and incorporating cultural elements. This will help preserve and strengthen the connection to heritage, reinforcing a sense of self-worth and belonging within the community.

Overall, the design of the space will be thoughtfully created to reflect the cultural identity and values of the indigenous community, fostering a welcoming environment that promotes positive mental health and a sense of pride.

This project will be a low cost and semi-permanent design space to encourage activation of the site until it is fully redeveloped.



1.3 / Connectedness and Wellbeing

The collaborative design process envisions a space for the Ugarapul, Yugara and Turrbal community to gather and engage in activities such as weekly men's mental health group, and local storytelling by the elders. The design will be driven by local community input to ensure that the design reflects the cultural identity and values of the indigenous community with a sense of belonging and pride. The vision for Bell Street aspires to encourage connection to country and improvement to the wellbeing of the local community through conscientious design.



Existing Mural art in Bell Street led by Indigenous artist Robin 'Tallman' Wakkajinda

1.4 / Urban Greening

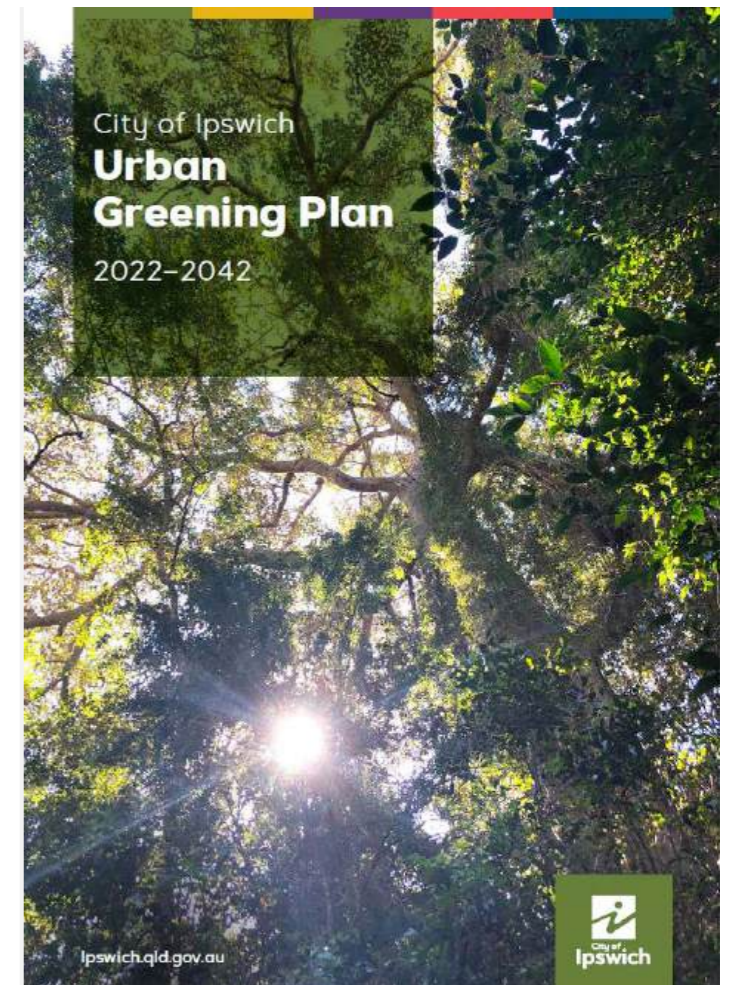
Integrating the principles of the City of Ipswich's "Urban Greening Plan" into the design of the new Dungeel Circle meeting space offers an opportunity to enhance environmental sustainability and user comfort. By incorporating extensive vegetation, including native trees and understory plants, the design will reduce the urban heat island effect, creating a cooler and more inviting atmosphere. Strategic canopy placement will provide shade, improve air quality, and support local biodiversity. These elements not only enhance the aesthetic value of the space but also contribute to stormwater management and provide significant health benefits, aligning with the community's vision for a resilient and liveable urban environment.



Scaly-breasted Lorikeet feeding in *Melaleuca viminalis* in an urban setting



Pandorea pandorana (Wonga Wonga Vine)

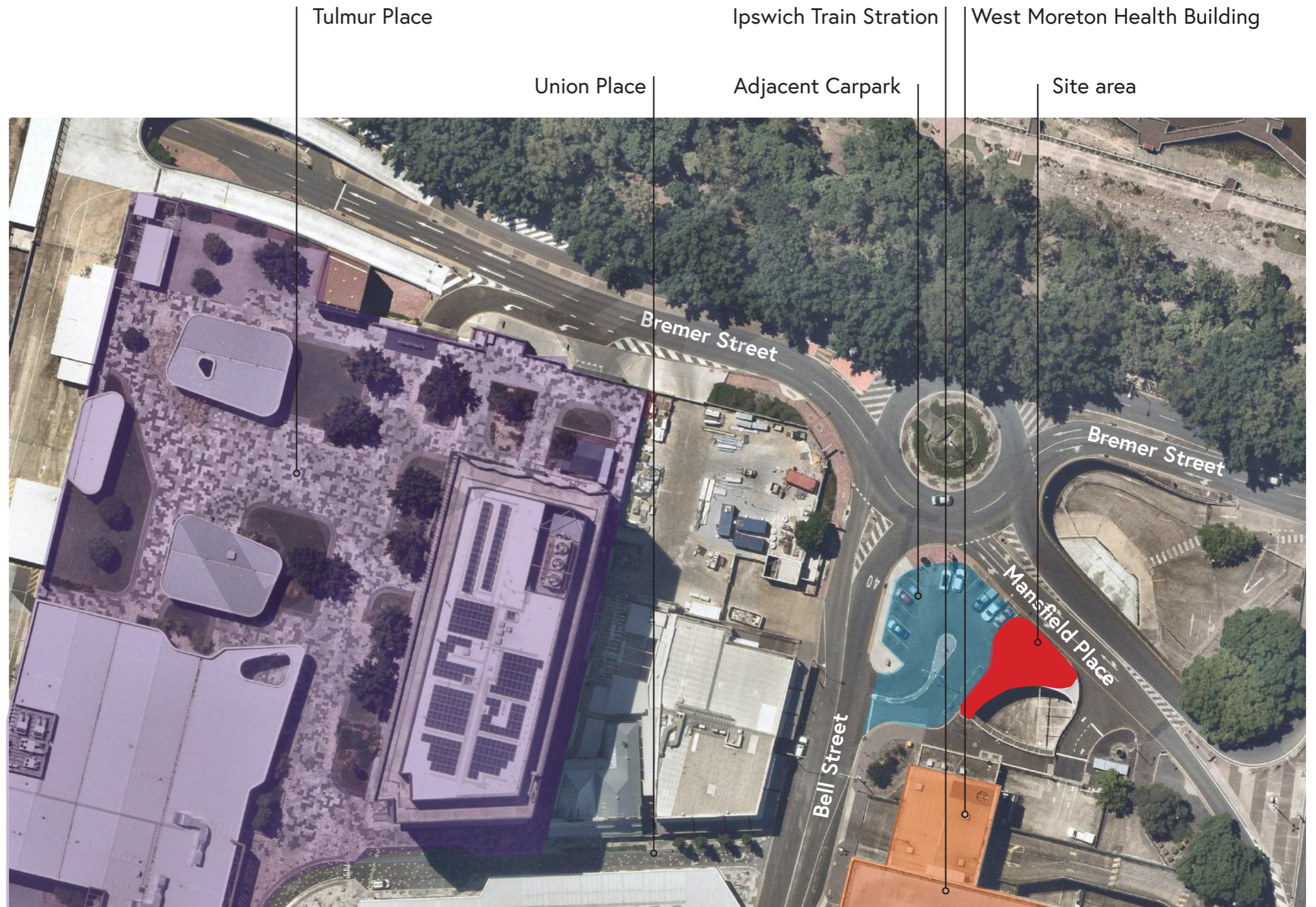




Concept Design

2.1 / Site Context

The proposed location for the new Dungeel Circle meeting place is situated at the end of Bell Street, right in the central business district of Ipswich. Currently, this site presents as a neglected urban void amidst the bustling transit precinct of the city. Dominated by hard pavements and roads, the area is unwelcoming and aesthetically unappealing. Despite these challenges, the site offers excellent accessibility for both pedestrians and vehicles, benefiting from proximity to the nearby train station and Tulumur Place, both of which are within easy walking distance.



Context Plan



2.2 / Design Objectives

Cultural Reflection and Identity

- Design an inclusive and welcoming space that embodies the cultural identity and values of the Indigenous community, instilling a sense of belonging and pride.
- Integrate culturally significant elements, symbols, and artwork to reflect the community's heritage and foster a sense of ownership and connection.

Promotion of Mental Wellbeing

- Utilise natural elements and green spaces within the design to positively impact mental health.
- Include features such as trees, plants, and open spaces that are known to reduce stress, improve mood, and enhance overall wellbeing, thereby creating a serene and calming atmosphere.

Community Engagement and Support

- Aim to improve community interaction with Bell Street and strengthen ties with the Indigenous community.
- Design the space to encourage community involvement and support, ensuring the project moves forward with collective enthusiasm and commitment.

Functional Design for Activities

- Consider the variety of activities planned for the space, such as men's mental health groups and storytelling sessions, to enhance user experience.
- Ensure clear and intuitive spatial organisation, comfortable seating, and adaptable features to support the diverse needs of the community, facilitating engagement and social connection.

Safety and Security

- Prioritise public safety and security in the design, incorporating well-lit areas and clear sightlines to enhance surveillance and foster a safe environment.
- Design the space to allow community members to engage freely in activities without concern for their safety, aligning with the project's vision of inclusivity.

User Satisfaction

- Achieve high user satisfaction through a well-designed layout that not only meets but exceeds the expectations of those who interact with the space.
- Focus on usability and comfort to ensure that the space is not only functional but also enjoyable for all users.

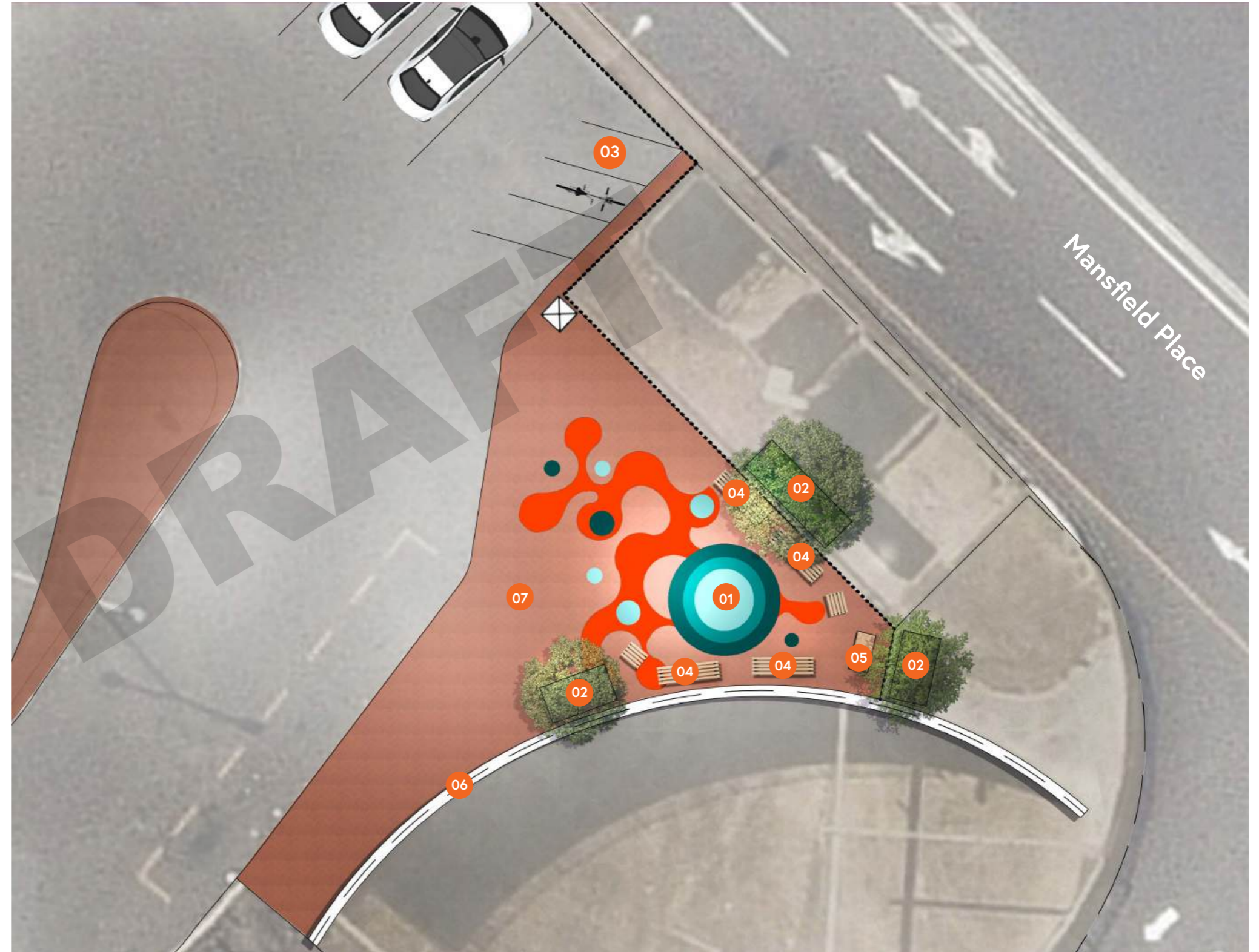


| Proposed site for the Dungeel Circle Meeting Place

2.3 / Concept Plan

Key

- 01** Pavement artwork
 - artwork painted by local Indigenous Artist
- 02** Planter boxes
 - purpose built planter boxes
 - marine ply external cladding suitable for painting
 - artwork painted by local Indigenous Artist
 - 2 No. 1800L x 1000W x 700H
 - 1 No. 3000L x 1000W x 700H
- 03** Carpark with proposed bike parking spaces
 - remove two car parking bays to relocate existing motorbike parking
 - new line marking
- 04** Seating
 - propriety bench seating
 - propriety cube seating
- 05** Pre-cut Sandstone block
 - 1 No. 500 x 500 x 1000L
- 06** Mural wall
 - artwork painted by local Indigenous Artist
- 07** Existing brick pavers to be retained



A3 1:500 0 10 20 30m



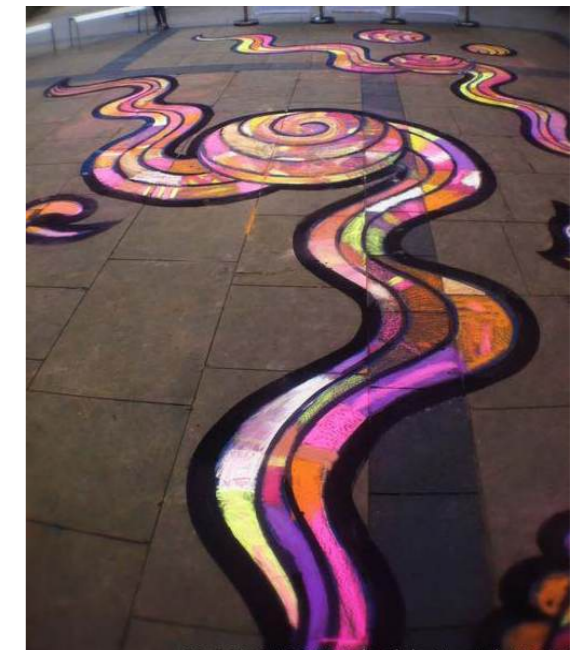


2.4 / Character Images



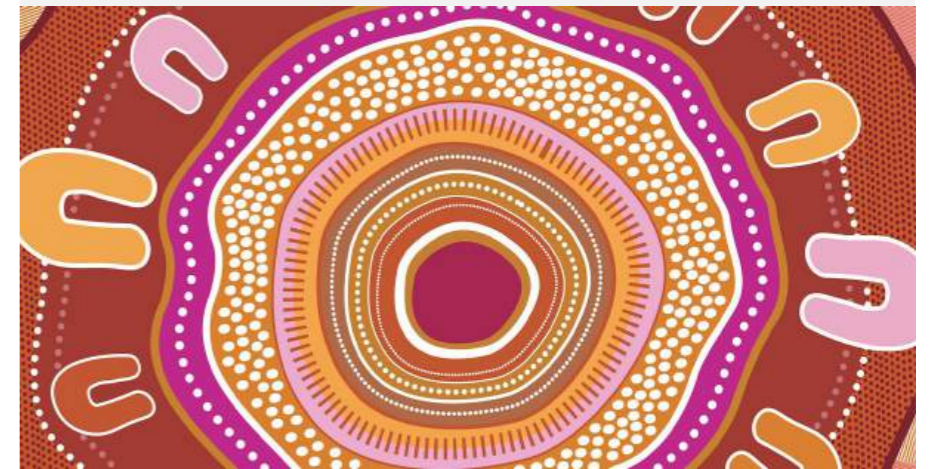
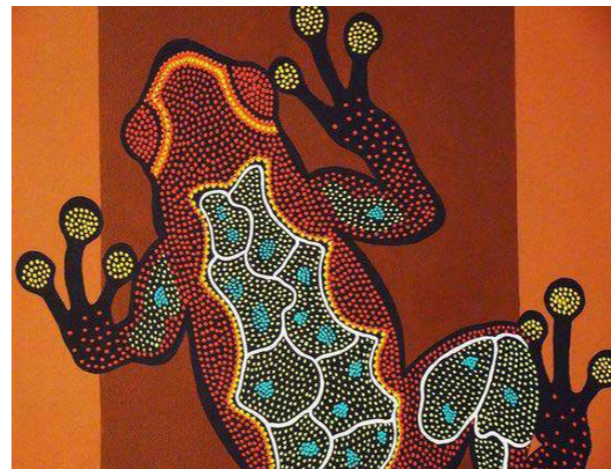
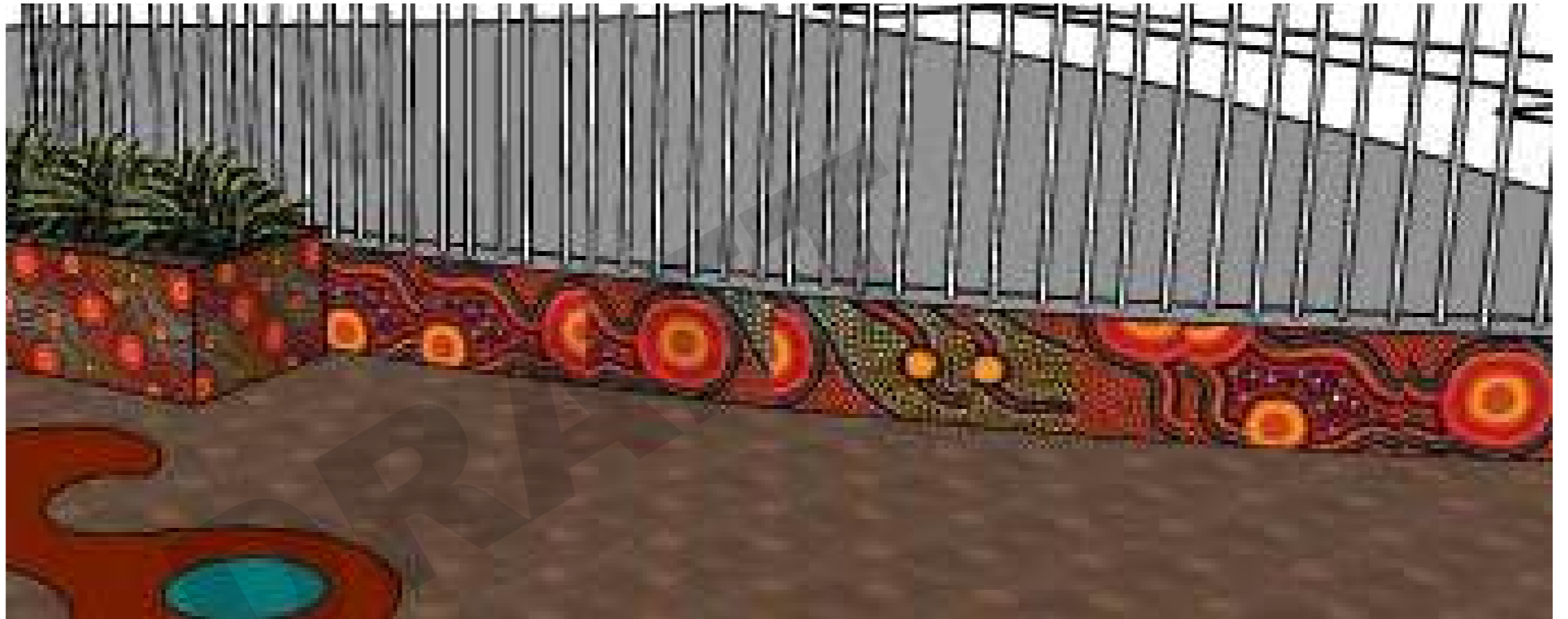
2.5 / Pavement Artwork

Incorporating pavement paint art as a central feature of the Dungeel Circle meeting place enriches the space with cultural identity, vibrancy, and definition. Engaging local community members and Indigenous artists in creating these artworks fosters a deep sense of pride, ownership, and respect for the space. This collaborative approach not only beautifies the area but also strengthens communal ties and celebrates local heritage.



2.6 / Mural Artwork

The proposed mural wall will be designed by local Ugarapul artists / community members. This initiative will encourage site activation and ownership of the meeting space. Other initiatives may include artwork on the planter boxes.



2.7 / Sections



Plant types...

Planter Box
with painted
mural

Linear Seat with armrests
1800mm fencing

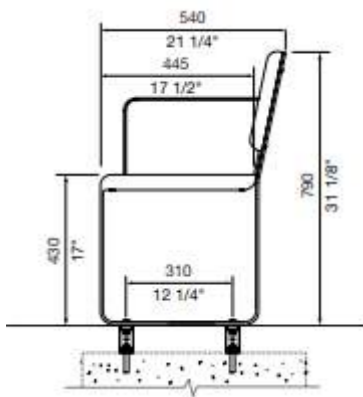
Planter Box

Tree species



2.8 / Design Details

SEATING



Bench Seat

- LS10 Linea bench seat
- powdercoated metal frame, 1800 mm with aluminium spotted gum slats

Supplier price: \$3,220 + Del + GST

Street Furniture Australia

STONE BOULDER SEATING



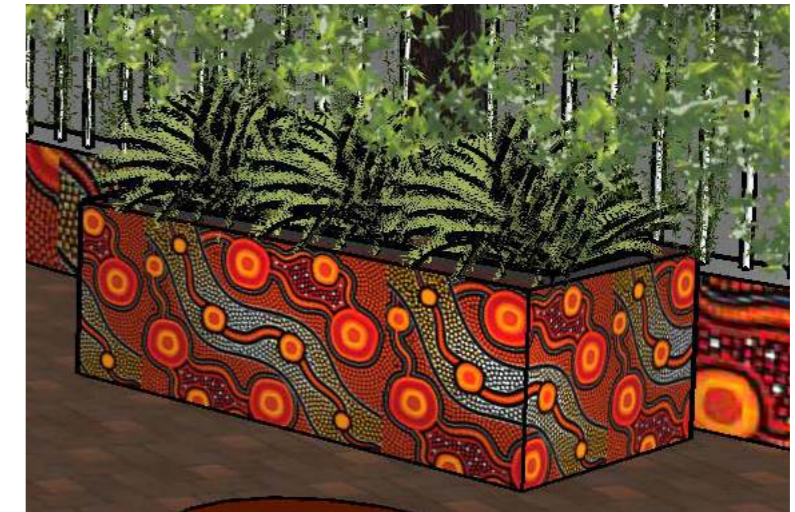
Sandstone Seat

- Pre-cut Sandstone block 500 x 500 x 1000H

Supplier price: TBC

Helidon Sandstone

PLANTER BOX



Custom Planters

- purpose built planter boxes
- marine ply external cladding suitable for painting
- Bitumous paint to internal surfaces
- artwork painted by local Indigenous Artist
- 2 No. 1800L x 1000W x 700H
- 1 No. 3000L x 1000W x 700H

Price: TBC



Cube Seat

- LIC6 Linea Cube seat
- powdercoated metal frame, 1800 mm with aluminium spotted gum slats

Supplier price: \$1,605 + Del + GST

Street Furniture Australia